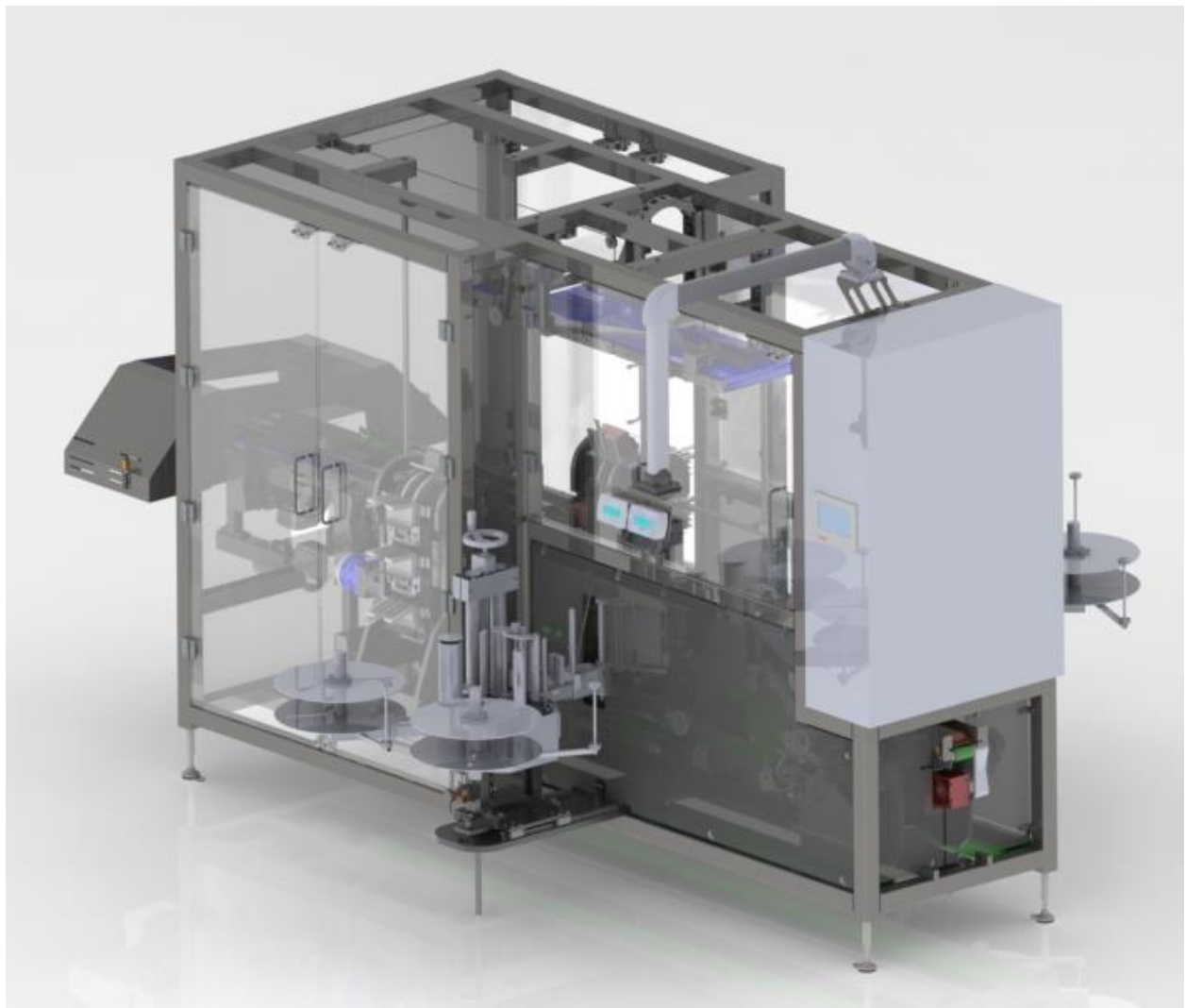


Multipax

A flexible label packer to bundle individual packs into multipacks with side labelling



Bundling of individual packs into multipacks with side labelling provides customers with the flexible possibility of promotional packaging and provides consumers with an overview of the remaining packaging.

Multipax is a specially designed label packer and proven and reliable machine solution for the production of snack multipacks. The automatic labelling is undertaken on the sides by means of perforated, pre-printed and self-adhesive labels. The multipacks are formed by stacking 2 to 8 individual packs and can be passed directly to a packaging machine via an out-feed conveyor for further processing without any additional packaging. Because there is no need for an outer container, packaging time and costs can be saved on the one hand, whereas the volumes of waste can be reduced on the other, meaning there is no extra burden on the environment.



Robust, compact and easy to use

Multipax offers quick and easy retrofitting and set-up times thanks to the use of various format compositions. The individual packs are fed from the production line to the stacking shaft of the **Multipax** via a feed-conveyor belt. Depending on the requirements and use, multipacks from 2 to 8 individual packs are produced by means of labelling on the sides. Both the labelled multipacks as well as the non-labelled individual packs can be sent directly for further packaging in boxes and do not have to be repackaged.

The **Multipax** only requires minimal maintenance thanks to the sturdy design and the custom-built high-precision individual parts. Particular emphasis is placed on modularity, ease of use and service-friendly configuration, not least due to optimum accessibility. The **Multipax** can be operated in two rows to increase the capacity. The system can be operated around the clock (24/7) or switched off if not in use on a daily basis.

The **Multipax** can be ordered with the flexible XTS transport system on request, whereby the carrier can be automatically adapted to the respective package lengths. This allows for maximum flexibility with minimum retrofitting work. The system can be equipped with an additional bypass band if individual packs or formats, which do not have to be labelled, are to be fed through the **Multipax**.

Use and performance range

The operator is able to quickly and flexibly react to changes in the market requirements thanks to the **Multipax**. This saves on changeover times and reduces the packaging material in stock. Country-specific designs or languages are also facilitated using other labels. When it comes to promotional packaging, it is also possible to label individual packs more than once, so that the quantity of packages can be easily changed during a certain period of time.

The **Multipax** is primarily used in the food industry. It is particularly suitable for labelling and packaging snack products, such as crackers, biscuits, cereal bars, crispbread and cheese or confectionery such as chocolate bars, blocks of chocolate, sweets and chewing gum in multipacks.

All benefits at a glance:

- Flexibility in terms of individual and multi-pack (2 – 8 individual packs) sizes
- Side labelling
- Various format compositions facilitate quick retrofitting and set-up times
- No additional outer packaging necessary (saves packaging time and costs)
- Reduces packaging waste
- Individual packs can be fed directly for further processing in boxes via a bypass
- System can also be operated in a two-row format
- Product changes, country-specific designs or languages can be accommodated by changing labels

Multipax can be ordered in the following configurations:

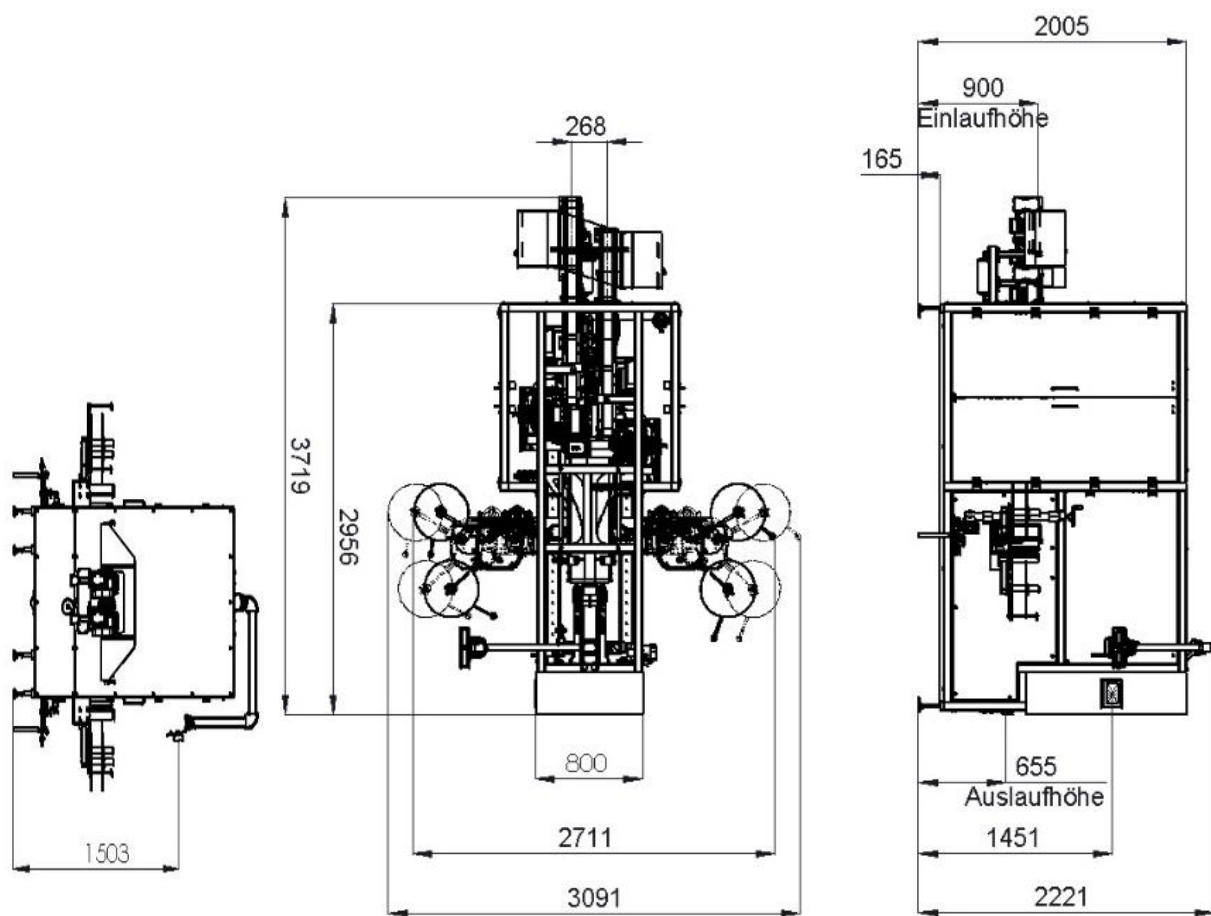
Type	Quantity of individual packs	Size of individual packs	Quantity of multipacks
Single row system	150/min	40 x 50 x 10 mm to 150 x 80 x 20 mm	2 to 8 individual packs
Two row system	250/min	40 x 50 x 10 mm to 150 x 80 x 20 mm	2 to 8 individual packs

A bypass works with all configurations!

Mecha AG

Stockmattstrasse 12
3123 Belp
www.mecha.ch

Multipax dimension drawing:



Contact information:

Mr. Lukas Rohr
CEO
T +41 31 332 18 57
l.rohr@mecha.ch